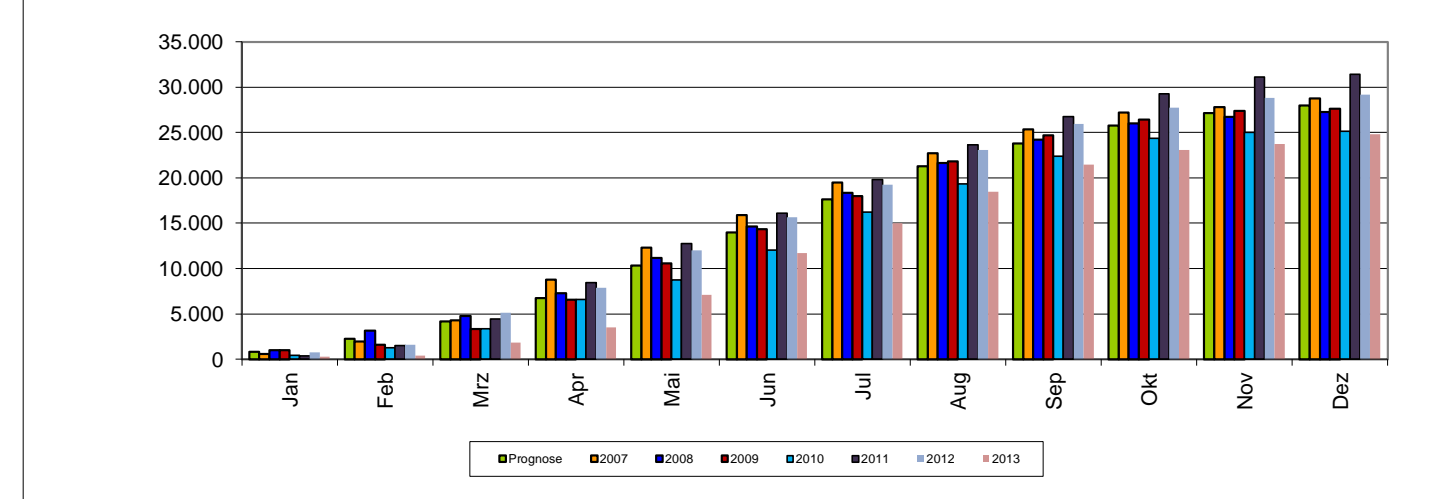
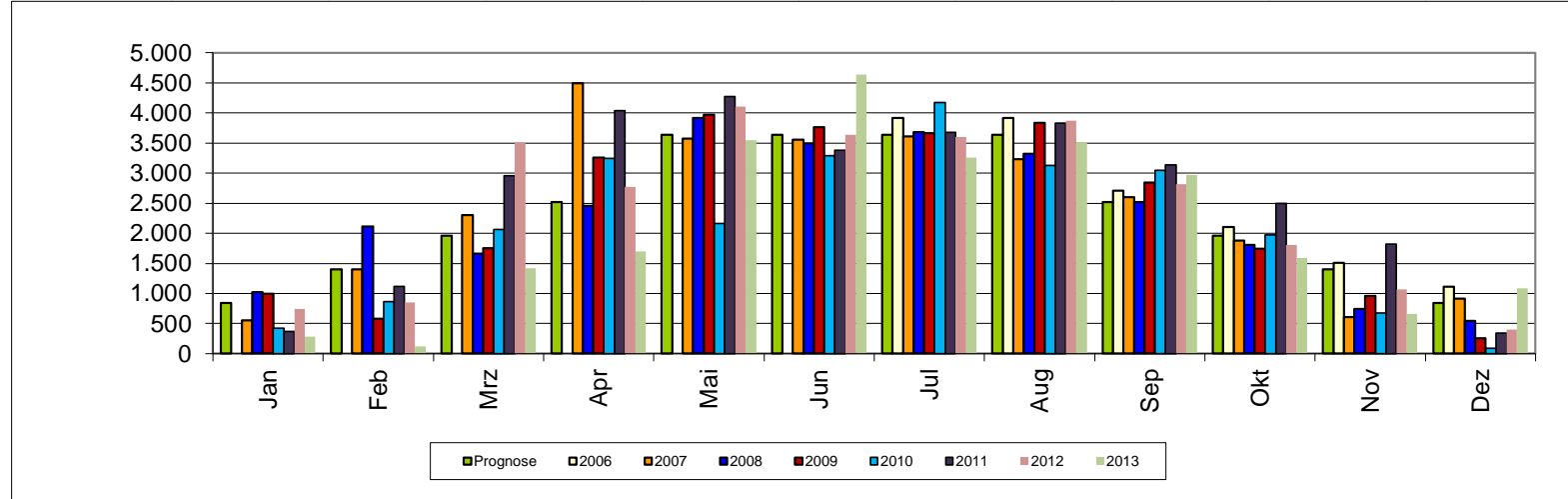


Photovoltaikanlage auf dem Vereinsheim des FV Tennenbronn

| Monatswerte | | | | | | | | | |
|--------------|---------------|---------------|---------------|---------------|---------------|---------------|---------------|---------------|---------------|
| Monat | Prognose | 2006 | 2007 | 2008 | 2009 | 2010 | 2011 | 2012 | 2013 |
| Jan | 840 | | 557 | 1.023 | 995 | 424 | 370 | 747 | 284 |
| Feb | 1.400 | | 1.405 | 2.111 | 577 | 864 | 1.121 | 854 | 121 |
| Mrz | 1.960 | | 2.305 | 1.663 | 1.757 | 2.064 | 2.952 | 3.515 | 1.422 |
| Apr | 2.520 | | 4.490 | 2.456 | 3.260 | 3.248 | 4.034 | 2.770 | 1.702 |
| Mai | 3.640 | | 3.571 | 3.914 | 3.970 | 2.159 | 4.274 | 4.108 | 3.550 |
| Jun | 3.640 | | 3.557 | 3.489 | 3.764 | 3.292 | 3.381 | 3.633 | 4.639 |
| Jul | 3.640 | 3.912 | 3.609 | 3.680 | 3.666 | 4.171 | 3.677 | 3.598 | 3.257 |
| Aug | 3.640 | 3.912 | 3.230 | 3.325 | 3.833 | 3.125 | 3.830 | 3.870 | 3.510 |
| Sep | 2.520 | 2.708 | 2.598 | 2.519 | 2.841 | 3.045 | 3.137 | 2.820 | 2.969 |
| Okt | 1.960 | 2.107 | 1.881 | 1.807 | 1.739 | 1.969 | 2.494 | 1.807 | 1.588 |
| Nov | 1.400 | 1.505 | 605 | 739 | 957 | 671 | 1.817 | 1.070 | 659 |
| Dez | 840 | 1.113 | 916 | 544 | 258 | 91 | 344 | 402 | 1.086 |
| Summe | 28.000 | 15.257 | 28.724 | 27.270 | 27.617 | 25.123 | 31.431 | 29.194 | 24.787 |

| Kumulierte Werte | | | | | | | | |
|------------------|----------|--------|--------|--------|--------|--------|--------|--------|
| Monat | Prognose | 2007 | 2008 | 2009 | 2010 | 2011 | 2012 | 2013 |
| Jan | 840 | 557 | 1.023 | 995 | 424 | 370 | 747 | 284 |
| Feb | 2.240 | 1.962 | 3.134 | 1.572 | 1.288 | 1.491 | 1.601 | 405 |
| Mrz | 4.200 | 4.267 | 4.797 | 3.329 | 3.352 | 4.443 | 5.116 | 1.827 |
| Apr | 6.720 | 8.757 | 7.253 | 6.589 | 6.600 | 8.477 | 7.886 | 3.529 |
| Mai | 10.360 | 12.328 | 11.167 | 10.559 | 8.759 | 12.751 | 11.994 | 7.079 |
| Jun | 14.000 | 15.885 | 14.656 | 14.323 | 12.051 | 16.132 | 15.627 | 11.718 |
| Jul | 17.640 | 19.494 | 18.336 | 17.989 | 16.222 | 19.809 | 19.225 | 14.975 |
| Aug | 21.280 | 22.724 | 21.661 | 21.822 | 19.347 | 23.639 | 23.095 | 18.485 |
| Sep | 23.800 | 25.322 | 24.180 | 24.663 | 22.392 | 26.776 | 25.915 | 21.454 |
| Okt | 25.760 | 27.203 | 25.987 | 26.402 | 24.361 | 29.270 | 27.722 | 23.042 |
| Nov | 27.160 | 27.808 | 26.726 | 27.359 | 25.032 | 31.087 | 28.792 | 23.701 |
| Dez | 28.000 | 28.724 | 27.270 | 27.617 | 25.123 | 31.431 | 29.194 | 24.787 |



Alle Zahlen sind in [kWh] angegeben